

Model 95 – IX,X

Slide aluminum base hole over the bolt and start a 5/16" nut onto the bolt. Do this for all four holes. Making sure the aluminum base is flush with the motor leg.

- SEE FIGURE 1



Figure 1

Model 95 – IX,X

Place pump flange over the top of the motor shaft and onto the top of the motor. Align with the two aluminum bases. - **SEE FIGURE 2**

Place a washer onto each of four Allen head motor bolts. Place through the pump flange and hand start into motor face plate. - **SEE FIGURE 3**

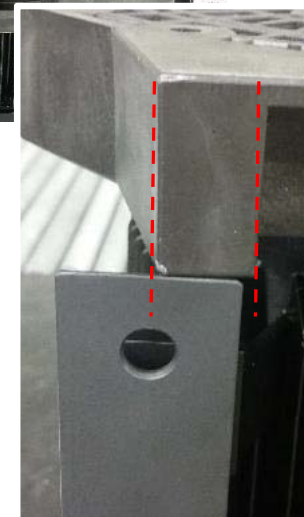


Figure 2



Figure 3

Model 95 – IX,X

Tighten bolts in an X pattern. - **SEE FIGURE 4**

Place a slinger over the motor shaft and press down until flush with pump flange. - **SEE FIGURE 5**



Figure 4



Figure 5

Model 95 – IX,X

Lubricate seal seat with water only.
Gently press into seal housing. Wipe
the surface of the white ceramic.

Place the seal housing over the motor
shaft and onto the pump flange,
aligning as you go. Be careful not to
chip the ceramic. - **SEE FIGURE 6**



Figure 6

Model 95 – IX,X

With the seal facing down, align the two impeller keys with the two key slots of the motor shaft. - **SEE FIGURE 7**

Slide impeller on until it meets with the ceramic seat.



Figure 7

Model 95 – IX,X

Place a Viton o-ring over the motor shaft and into the recess of the impeller. - **SEE FIGURE 8**



Figure 8

Model 95 – IX,X

Place one drop of loctite inside of the impeller nut and hand start onto motor shaft. - **SEE FIGURE 9**



Figure 9

Model 95 – IX,X

At the base of the diffuser is an arrow. Place this arrow at the 6 o'clock position when installing the diffuser. - **SEE FIGURE 10**



Figure 10

Model 95 – IX,X

Diffuser will now fit into recess in the seal housing. Using a Philips head screws, attach diffuser to the seal housing. - **SEE FIGURE 11**

Install diffuser o-ring into top recess of diffuser. - **SEE FIGURE 12**



Figure 11



Figure 12

Model 95 – IX,X

Install the casing O-Ring on the outer-bottom lip of the seal housing. - **SEE FIGURE 13**



Figure 13

Model 95 – IX,X

Place the casing assembly on top of the completed motor unit. - **SEE FIGURE 14**



Figure 14

Model 95 – IX,X

Place bolt with washers through the pump flange and through the casing. Hand start a nut onto the bolt. Only four flange holes will align with the four holes in the casing. - **SEE FIGURE 15**

Once all four bolts are in place, evenly tighten down the bolts. - **SEE FIGURE 16**



Figure 15



Figure 16

Model 95 – IX,X

Place each of the remaining bolts into the remaining pump flange holes. -
SEE FIGURE 17



Figure 17

Model 95 – IX,X

Tighten all twelve screws in a star pattern
(*Check for seating*) - **SEE FIGURE 18**



Figure 18

Install four plastic hex head protective caps
on each nut. - **SEE FIGURE 19**



Figure 19